

One Billion Trees Fund

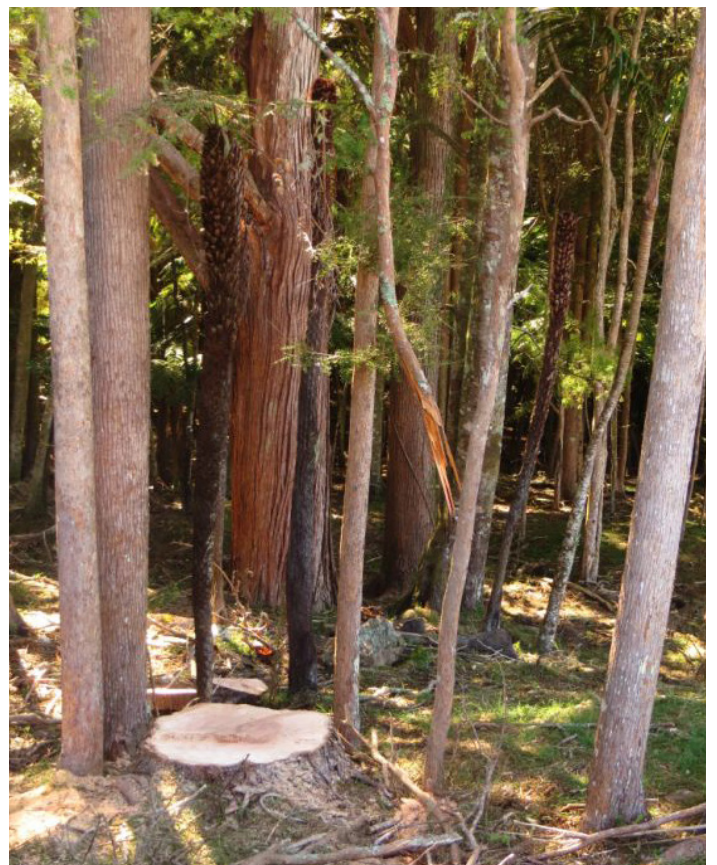
How tōtara can drive value and growth in Northland and for New Zealand

One Northland-based initiative looking at the feasibility of sustainably growing and harvesting tōtara for commercial use could potentially unlock significant future economic and environmental gains for the region and New Zealand.

The Tōtara Industry Pilot is a partnership between Te Uru Rākau – New Zealand Forest Service through its One Billion Trees Programme, Scion, Taitokerau Māori Forests Inc and Tane's Tree Trust, along with other government agencies and private landowners. This collaboration was launched in 2018 to test how sustainable regeneration and cultivation of tōtara can deliver commercial opportunities for local industries, businesses, and communities, including Māori.

Phase one of the initiative was completed in 2020 and showed there is enough tōtara on private and Māori-owned land in Northland to develop a strong productive economy, worth an estimated \$30 million a year to the local and national economies.

Tōtara grows quickly in Northland, compared with other wood species, due to the region's climate. Tōtara has been an under-used resource and many trees in the region have matured to where they can be harvested.



Selective harvesting of a farm forestry totara stand.



Natural regrowth totara in Northland

Manufactured tōtara products can include wall and ceiling linings, carved gifts, household items and souvenirs. These can also be made in Northland using wood processing and kiln dried cost-effectively at existing commercial sawmills and factories.

There is growing interest from landowners in diversifying their land for using tōtara, which can be harvested and milled under the Forests Act. As part of its regulatory responsibility, Te Uru Rākau – New Zealand Forest Service is providing guidance on developing Sustainable Forest Management plans, and compliance with the Act, so the resource is sustainably managed.

The potential for Northland and New Zealand includes creating jobs, new businesses and increasing environmental sustainability through the regeneration and planting of native forest.

In the future, the project will be led by Māori and work with landowners, wood processors, iwi and manufacturers to

develop commercialisation plans, identify new markets and ensure the outcomes deliver long-term benefits to the local communities.

Initiatives such as the Tōtara Industry Pilot support future opportunities and provide value for local communities. It also demonstrates the role of forestry in achieving these outcomes. Te Uru Rākau – New Zealand Forest Service is proud to be part of the project as another way of ensuring forestry plays a key role in delivering economic and environmental growth for New Zealand.

For more information

Go to: www.totaraindustry.co.nz

www.mpi.govt.nz/forestry/funding-tree-planting-research/one-billion-trees-programme/