


# Snapshot of New Zealand's Forestry and Wood Processing Sector

New Zealand is ready to meet the growing global  
demand for sustainable forest products



## New Zealand offers reliable and sustainable forest-based bioeconomy solutions – now and into the future

An example of a sustainable pine production forest in New Zealand.

**New Zealand's planted forests, strong processing industry, and international market access provide a renewable and scalable supply of high-quality radiata pine.**

**New Zealand's radiata pine planted forests are highly productive and fast growing**

With an average harvest cycle of just 28 years and a typical recoverable yield of 650 to 800 cubic metres per hectare, New Zealand pine ensures supply of the resources needed to sustain a low-carbon, forest-based bioeconomy.

**New Zealand's planted forests are sustainably managed**

New Zealand has a low deforestation risk and shares the European Union's goal of encouraging trade in deforestation-free products. Most commercial forests are Forest Stewardship Council (FSC) certified with nearly one-third of these also meeting the Programme for the Endorsement of Forest Certification (PEFC) standards.

**1.79<sup>M</sup>  
hectares**

of planted production forest in New Zealand.

This excludes non-production native and exotic forests that are part of parks and reserves.



## New Zealand radiata pine is an extremely versatile softwood

New Zealand pine is widely used for renewable, low-emission products. It is internationally valued for its performance and ease of manufacturing into high-value products.

### Structural products

New Zealand radiata pine is strong, stiff, and easy to treat or modify for demanding outdoor applications, making it ideal for construction. Being easy to machine and glue, it is readily manufactured into engineered wood products for mass timber construction, including glued-laminated timber, laminated veneer lumber (LVL), cross-laminated timber (CLT), parallel laminated timber (PLT), and optimised engineered lumber (OEL).

### Appearance products

Ease of machining, staining and coating make New Zealand pine perfect for furniture, joinery, and wood interiors. New Zealand's forest management regime produces clear wood ideal for mouldings, and door and decorative panelling.

### Panels and industrial products

New Zealand radiata pine is used to make wood panels and boards such as plywood, medium density fibreboard (MDF) and oriented strand board (OSB). Its solid timber is also used to manufacture pallets, packaging, cable drums, and concrete formwork.

### Pulp, paper, and packaging products

New Zealand pine's long fibres and light colour make it ideal for producing pulp used in paper, tissue, and packaging.

### New Zealand radiata pine for the bioeconomy

Ongoing research is revealing new high-value uses for radiata pine in the wider low-carbon bioeconomy. Emerging developments include bioplastics, bioadhesives, and pharmaceuticals and nutraceuticals.



The three-storey Scion building in Rotorua – Te Whare Nui o Tuteata – features a world-first engineered timber diagonal grid structure.

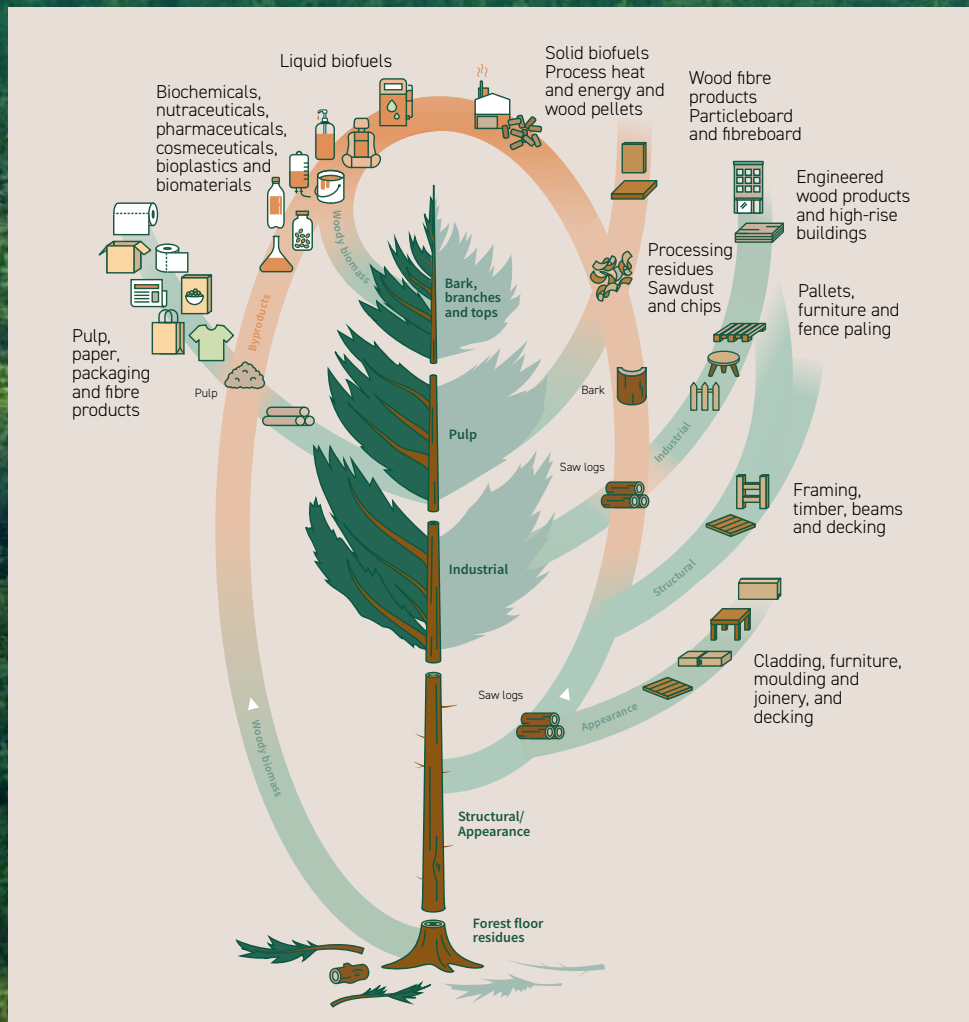


Thermal modification of New Zealand pine using heat and steam rather than chemicals enables it to have excellent thermal conductivity and natural durability and stability (source Abodo).



New Zealand pine bark extract has applications as nutraceutical products to improve wellbeing (source ENZO Nutraceuticals).

## New Zealand radiata pine versatility



For more information on forestry and wood processing in New Zealand, contact:

### Invest New Zealand

Invest New Zealand is a government agency dedicated to facilitating foreign direct investment in New Zealand. Invest New Zealand has co-funding tools that can support feasibility studies to de-risk investment for large projects.

[investnewzealand.nz](https://investnewzealand.nz)

**Te Kāwanatanga o Aotearoa**  
New Zealand Government

### Te Uru Rākau – New Zealand Forest Service

Te Uru Rākau – New Zealand Forest Service is the government lead for forestry in New Zealand and supports the forestry and wood processing sector to achieve its full potential.

[mpi.govt.nz/forestry](https://mpi.govt.nz/forestry)